



CANADABRED CONFORMATION

Your assurance of superior physical traits

Swine in commercial production systems must be physically sound and structurally correct to carry out their normal functions. Animals that cannot maintain minimum levels of physical soundness need to be culled early from the herd, resulting in economic losses.

When you purchase Canadabred swine genetics, you're assured of top conformation, resulting in animals that will continue to produce and generate solid economic returns.

Conformation is critical for commercial success

In commercial herds, the conformation of sows is used primarily to predict the risk of involuntary culling. Reducing involuntary culling of sows has several advantages:

- Reduction in the annual cost of replacement
- Increase in the average number of piglets per litter because of the decreasing number of first parity sows
- Reduction in the number of non-reproductive days
- Increased opportunities for selection on other traits.

Conformation is also important in terms of pig performance. Some feet and leg traits, for example, are

positively correlated with growth rate, since animals that have trouble standing or walking cannot perform well in modern rearing conditions. Sound conformation means faster close-outs in finishing barns.

Canadabred conformation is assured

Conformation is verified by the Canadabred Selection Team. All gilts and boars are rigorously selected for superior conformation traits to reduce variability in your herd:

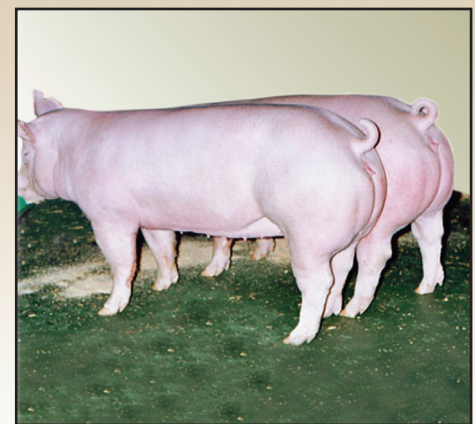
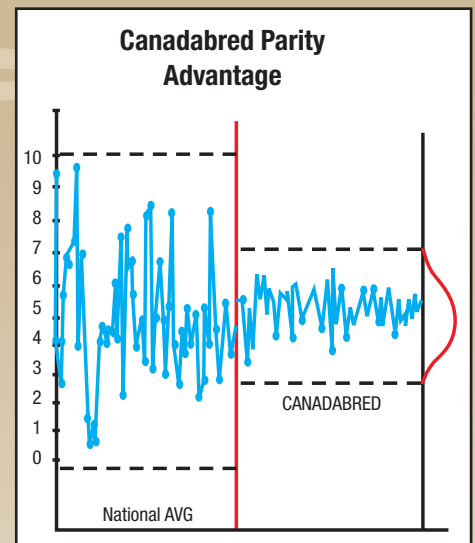
- Feet, legs and toes
- Underlines
- Overall structure.

Buyers can be assured that Canadabred animals have what it takes to deliver superior, lasting performance.

Comprehensive sales and service support

Canadabred delivers sound genetics based on your operation's needs. We provide 100% transparency of conformation, health monitoring and reporting, genetic evaluation and pedigrees.

Complete production and technical support are available to ensure our genetics deliver results in your operation.



Phone; 1 800 493 2627 ext. 28
Fax: 519 469 8692
email: canadabred@osi.org
www.canadabred.com

Count on Canadabred. Your program for success.
 **Canadabred genetics available exclusively from OSI.**

