



The Fine Print

Notes from the General Manager

Results from the third tender of the Hog Farm Transition Program are now available from the Canadian Pork Council. Ontario represented almost 1/3 of the total number of animals lost from production for the next three years, in all three categories.

	TOTAL #	ONTARIO #
Sows	105,348	32,613
Weaners	227,032	87,444
Finishing	339,190	132,669

Even though the industry is in a period of transition, OSI has remained focused on our number one core value - Genetic Improvement. OSI acts as a regional centre for the Canadian Centre for Swine Improvement (CCSI), and together with other regional centres, we have focused on developing estimated breeding values (EBVs), for various traits that have an economic benefit to commercial production. The practical application of meat quality trait research can help the entire swine industry to differentiate their products and become more competitive. Differentiation could be the key to the success of the Canadian swine industry.

Linwood Agricultural Days!

Visit our booth at the "Linwood Agriculture Day" in the New Linwood Community Centre on Tuesday, Feb 23rd. We look forward to visiting with you and addressing any questions on semen production & distribution, breeding choices, delivery etc. Be sure to pickup a free wall calendar. Refreshments and lunch provided. Door Prizes! Show runs from 9 am until 4.30 pm.



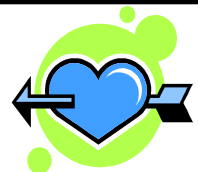
Coming Events!

- February 17, 2010 - [Southwestern Ontario Pork Conference](#)
- March 10, 2010 - [Western Fair Farm Show](#)
- March 30, 2010 - [Ontario Pork Annual General Meeting](#)
- March 31, 2010 - [London Swine Conference](#)
- April 07, 2010 - [OSI Producer Information Day and Annual Meeting](#)

For further details on any of the above noted events, please visit our web site @www.osi.org - "Current News & Events".

Happy Valentines Day
February 14th

Family Day!
February 15th



THE POWER OF ONE...THE VISION OF MANY

OSI Producer Information Day
and
OSI Annual Meeting: The Festival Inn,
Stratford, Ontario
Wednesday, April 7, 2010

Pricing



Purebred semen prices (for farms participating in the sharing agreement)

RANK	Top 1%	Top 2.5%	Top 5%	Top 10%	Top 20%	All others
INDEX	Over 160	150 to 159	141 to 149	132 to 140	121 to 131	
PRICE	\$75.00	\$65.00	\$55.00	\$50.00	\$45.00	\$40.00

Purebred semen monthly discount rates (please refer to the chart above for base prices)

	MONTHLY USE	% DISCOUNT
A	1 to 4 services	0%
B	5 to 9 services	10%
C	10 to 15 services	15%
D	16 to 24 services	20%
E	25 and more services	30%

Commercial semen monthly discount rates

MONTHLY USE	% DISCOUNT	SAVING PER SERVICE	PRICE PER SERVICE
1 to 16 services	0%	\$0.00	\$13.50
17 to 28 services	5%	\$0.67	\$12.83
29 to 41 services	10%	\$1.35	\$12.15
42 to 82 services	18%	\$2.43	\$11.07
83 to 166 services	22%	\$2.97	\$10.53
167 to 249 services	24%	\$3.24	\$10.26
250 to 332 services	26%	\$3.51	\$9.99
333 and more services	30%	\$4.08	\$9.45

Line Semen: ideal use for gilt replacement – no discounts

CODE	DESCRIPTION	PRICE PER SERVICE
22-01	OSI Pooled Yorkshire Maternal *	\$30.00
22-04	French Hyper-Prolific Yorkshire Line	\$35.00
22-11	Bodmin Yorkshire Maternal Line	\$40.00
22-12	Foster Yorkshire Line Maternal	\$35.00
77-01	OSI Pooled Landrace Maternal *	\$30.00

*Our best maternal boars, ranking high on the DLI and having positive total born EBVs.

Rods:

Quantity	Gilt	Spiral	Foam/adpt	Foam/no adp
Pkg of 5	\$2.00	\$2.10	\$2.00	N/A
Pkg of 25	\$9.50	\$10.00	\$9.50	\$10.00
Pkg of 50	\$16.00	\$17.00	\$16.00	\$20.00
Case of 500	\$145.00	\$155.00	\$145.00	\$155.00

Delivery

OSI Courier	Purolator Ground	Purolator Air	Fedex	Bus	Yantzi Feed Mill
\$15.00	\$25.00	\$50.00	\$60.00	\$25.00	\$5.00